

CTE PROGRAM & MAINTENANCE NEEDS

Why are we proposing a referendum?

Community input from two years of listening sessions (2017-18), a community survey (2019), and comprehensive assessment of CTE programming and district facilities have shaped the proposed school improvement plan. Key findings include:

OUTDATED CTE FACILITY & AGING INFRASTRUCTURE

- Outdated, aging facilities no longer support curriculum and current technologies
- Lack of adequate classroom/lab space to serve CTE programs equitably
- Lack of safe circulation space around equipment and machinery, appropriate plumbing for wash stations, and HVAC systems to support healthy ventilation required of the environment
- Inadequate electrical supply and technology infrastructure
- Limited space to bring teachers/students together collaboratively
- Insufficient storage for programming materials, projects, and equipment
- Inefficient 1983 boiler (HS) requiring costly repairs
- Failing roofing materials (ES Primary Wing) causing costly damage to the external structure and internal ceiling, wall, and flooring materials

CTE PROGRAM DEMAND

- Pittsville's CTE program is in high demand and grows with our local demand for skilled, job-ready graduates
- Over 60% of well-paying jobs in construction, manufacturing, healthcare, and IT go unfilled every year due to a skilled-trades labor shortage

FINANCIAL PLANNING & TIMING

- The District has planned responsibly. The Full Day Child Care will be self-sustaining by 2023 and the energy efficiency project levy will expire in 2030. This reduces the overall levy and creates an opportunity to build the new CTE Facility with minimal tax increase over current levels.
- Interest rates remain at historic low levels which may result in significantly lower borrowing costs and will reduce the length of borrowing to 15 years (vs. 20 years)

DID YOU KNOW? The structural redesign and use of metal roofing for the Elementary School Primary Wing will increase expected life span to 50 years and minimize long-term maintenance needs.



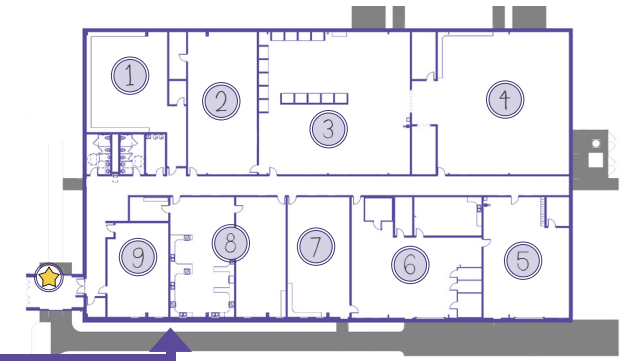
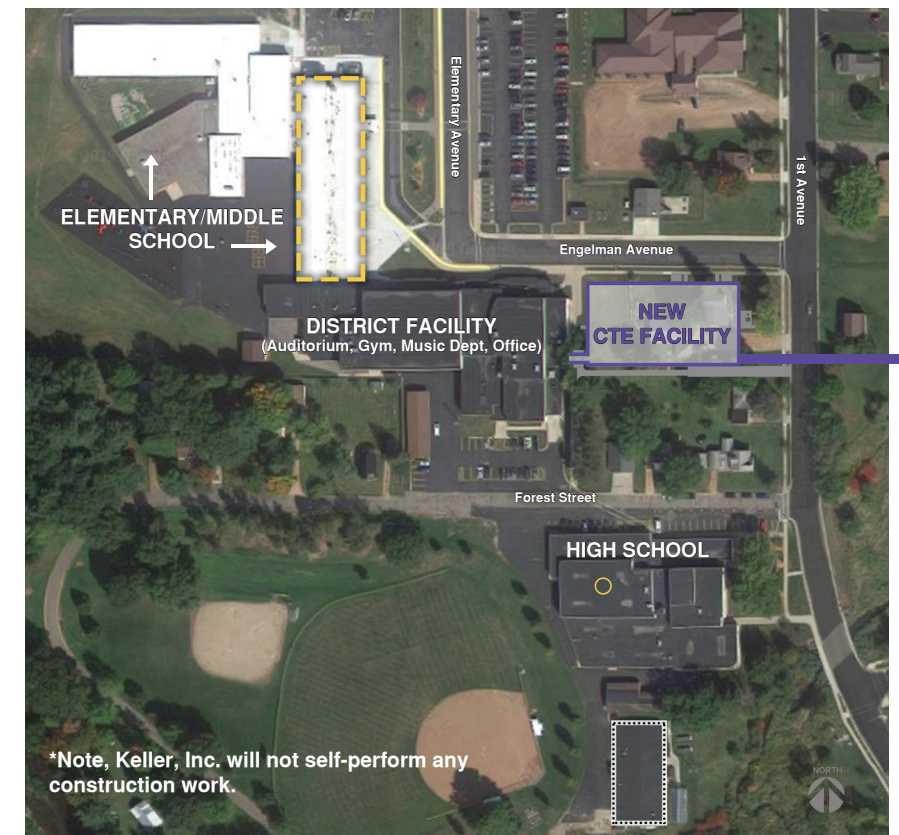
Ag class/lab space totals <1,200 sq. ft.; is isolated from academic/support spaces; lacks wash-stations, sufficient electrical/technology infrastructure, and space for animal science and Ag mechanics.



Some equipment in our Tech Ed lab is WWII surplus equipment and is over **75 years old**. Modern equipment will prepare students for today's workforce.



PRELIMINARY RENDERINGS & SITE PLAN



- PRELIMINARY SITE PLAN | KEY**
- ★ Secure Main Entry/Corridor
 - ① Business Ed Classroom/Lab
 - ② Technical Ed Classroom/Fabrication Lab
 - ③ Metals Manufacturing
 - ④ Woods Manufacturing
 - ⑤ Agriculture Mechanics Lab
 - ⑥ Sm/Lg Animal Lab & Processing
 - ⑦ Agriculture Ed Classroom
 - ⑧ Family & Consumer Science Classroom/Lab
 - ⑨ Lg Group Conference & Meeting Room
 - Heavy Construction | ES Primary Wing Roof Replacement
 - HS Boiler Replacement
 - ⋯ Re-purpose for Maint Shop & Equipment/Supply Storage (Current Tech Ed Facility)

*Note, Keller, Inc. will not self-perform any construction work.

ESTIMATED TAX IMPACT

How will the referendum affect taxes?

If approved, the estimated maximum tax rate increase over current levels will be 0.20 in 2021 and then declines to an average increase of 0.13 in 2022-35.

The tax increase is not additive and reflects an increase based on the FY20 school tax level.

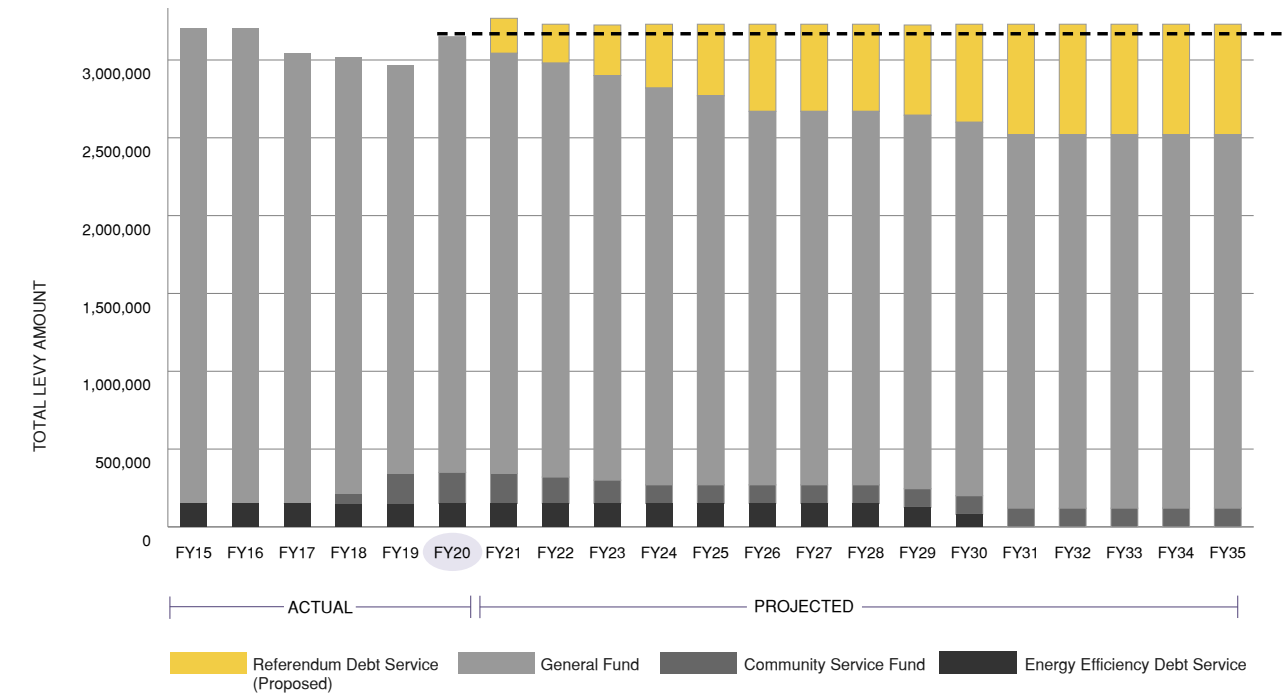
TOTAL PROJECT COST: \$6.7M	PROPERTY TAX INCREASE: \$0.20 (PER \$1,000 OF EQUALIZED PROPERTY VALUE; OVER FY20 LEVEL)	
	ANNUAL Estimated Tax Increase	MONTHLY Estimated Tax Increase
\$100,000 of Equalized Property Value	\$20.00	\$1.70
\$150,000 of Equalized Property Value	\$30.00	\$2.50
\$250,000 of Equalized Property Value	\$50.00	\$4.20

Estimated tax impacts are based on a 15-year borrowing with a projected interest rate of 3.25% and 1% annual property growth. Source: PMA Securities, LLC

TO LEARN MORE ABOUT TAX IMPACT ASSUMPTIONS AND TO CALCULATE YOUR ESTIMATED TAX IMPACT VISIT: www.pittsville.k12.wi.us

What is the effect of an approved \$6.7M referendum on the total levy?

The levy amount shown above the dashed line illustrates the tax increase over the FY20 level with an approved referendum. The gray bars represent the anticipated levy without an approved referendum. The yellow bars represent the total levy with an approved referendum (principal and interest).



CTE FACILITY SOLUTIONS

Where will the new facility be located?

If approved, the new career, agriculture, and technical education facility will be constructed east of the auditorium on two parcels of land currently in contingent contracts. Land will be purchased only after an approved referendum with designated referendum funds.

QUICK FACTS:

- Adaptable, 25,000 sq. ft. floor plan for comprehensive grades 7-12 programming and collaborative teaching and learning
- Perimeter sidewalk, fencing, and paved driveway to provide access to woods/metals manufacturing, animal science, and agriculture mechanics labs
- Lab space to support modern machines/equipment and technologies commonly found in the workplace environment
- Small/large animal pens & processing lab, storage, and classroom/lab space to support comprehensive Ag curriculum
- Safety upgrades incorporated for adequate circulation space, ventilation, and clean up
- Efficient mechanical, electrical, plumbing, and HVAC systems to support healthy environmental conditions
- Large-group conference and workspace for CTE programming, District and community use, and adult education
- Secured main entry and corridor with interior/exterior security upgrades

PRELIMINARY DESIGN & CONSTRUCTION TIMELINE

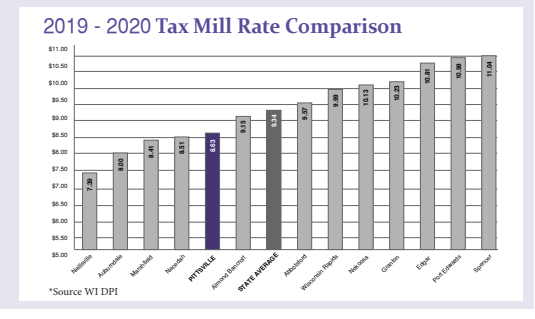


New CTE Facility
High School Boiler
Elementary School Primary Wing Roof

SCHOOL YEAR	2019-2020			2020-2021		2021-2022
	SPRING	SUMMER	FALL	WINTER	SPRING	FALL
Design						
Bid						
Construction						

DID YOU KNOW?

- PSD's mill rate has decreased by \$2.02 since 2015
- PSD's current mill rate of \$8.63 remains below the state average of \$9.34 and among the lowest in our region
- PSD's mill rate, with an approved referendum, is estimated to be a **MAXIMUM** of \$8.83 (2021) then declines to an average of \$8.76 (2022-35)



FREQUENTLY ASKED QUESTIONS

Visit www.pittsville.k12.wi.us to read comprehensive FAQs!

Q: Why not renovate existing space or build on the current site?

A: Evaluation of both options highlighted five key concerns:

- Cost/risk associated with existing land conditions and renovation of a 1968 structure
- Code compliance, regulations, and restrictions as a mandated component of the renovation
- Disruption to student learning
- Less effective outcomes for collaborative space and alignment to CTE program goals
- Additional construction required to house maintenance shop

Cost estimates to renovate the existing facility or build within strict limitations of the existing site were approximately 96% of constructing a new CTE facility (including the purchase of two adjacent parcels of land). The analysis considered DNR regulated setbacks and restrictions; risks associated with potential 'unknowns' of 1968 structures, building systems, and required mitigation/abatement of building or ground materials; high cost of reconfiguring or relocating electrical and gas utilities; and mandated codes and regulations including ADA compliance. Additionally, the availability and logistics of relocating students to an off-site facility during a year-long construction process presented safety, transportation, learning disruption, and cost/benefit concerns. Generally, these options met fewer overall program goals for upgrades to the classroom/lab space, accommodations for modern equipment and technologies, needs for storage and safety features; and practical design for classroom/lab space to support Technical, Agriculture, Family, and Consumer Science, and Business Education teaching and learning.

Q: What will be done with the current Tech Ed facility?

A: Originally built in 1968 as an out-building, this space will be re-purposed to house the District's maintenance equipment, supplies, and shop. This will support improved organization and consolidation of maintenance functions district-wide, creates efficiency for custodial staff, and eliminates the need to build additional maintenance structures to accommodate current needs for equipment, material storage, and practical workspace.

Q: When will a detailed design for the new CTE Facility be available?

A: A comprehensive program and facility needs assessment provided critical information for the development of the PRELIMINARY RENDERING & SITE PLANS. Only after the community approves a referendum will the District spend taxpayer funds to develop and finalize Design & Construction Documents. If approved on April 7, this process will begin immediately. At that time, the Design/Construction Management firm and District will also engage interested and qualified contractors, trades, and suppliers. This will be a competitive bidding process to ensure broad opportunity, cost-effective solutions, and quality construction.

Q: Will the tax impact associated with the referendum go up each year?

A: No. The MAXIMUM ANNUAL tax increase is calculated over the current 2020 tax level and is estimated at \$20 (per \$100,000 of equalized property value) in 2021. The AVERAGE ANNUAL tax increase in 2022-35 is also calculated over the current 2020 tax level and will decline to an estimated \$13 (per \$100,000 of equalized property value.)

Referendum 2020 NEWSLETTER



Pittsville School District
5459 Elementary Ave., Suite 2
Pittsville, WI 54466
pittsville.k12.wi.us
(715) 884-6694

Referendum 2020 NEWSLETTER

Dear Community,

The Pittsville School District is proud to be at the core of our community and to have served generations of families, students, and residents. We hold in common a desire for educational excellence, a respect for tradition, a need for fiscal responsibility, and a focused commitment to make a difference for all students.

As we plan for the future, our goals must build on past success and ensure relevance for the educational curriculum and spaces we need today and anticipate for future generations. The April 7 referendum offers an opportunity to improve on facilities that have served us well for generations but now require updating. The proposed new Career and Technical Education (CTE) Facility supports our community's priority for advancing career, agriculture, and technical education, and equips classrooms and labs with the necessary tools and technology. The proposed referendum also addresses community concerns to replace the problematic Elementary School Primary Wing roof and 1983 High School boiler.

In this newsletter, you will find comprehensive referendum information including: why renovating the current facility and building on the current site presents critical challenges (see **FAQs**); how preliminary layouts are pairing programs intentionally within the new CTE Facility (see **Preliminary Site Plan**); and, what the estimated impact of a **\$6.7M** project will be for our residents (see **Tax Impact Chart**). You will note references to the District website for additional details and reports, and learn how you can participate in upcoming events (see **Referendum Information Night & School Tour**), register to vote, and much more!

We encourage you to learn the facts, ask questions, and commit to being an informed voter on April 7!

Our best, for their best.

~Rodney Figueroa, Superintendent & the Pittsville School Board

Mandy Hoogesteger, Melissa Marti, Connie Potter, Jane Wesely, and Robert Wolff



VOTER INFORMATION

What will be on the ballot?

Wisconsin law requires the referendum question to be placed on the ballot as follows. It will include two key facts: not-to-exceed project cost and general project description. It will not contain important tax impact information. Please review the information found on the TAX IMPACT CHART found inside this newsletter.

VOTING DETAILS:

- Polls open April 7, 7:00AM - 8:00PM
- Registered voters may vote early absentee by mail or at their municipal clerk's office. Please contact your municipal clerk to confirm hours.
- Visit MYVOTE.WI.GOV for information on voter registration, absentee voting, photo ID requirements, and polling locations.

Referendum	
Shall the School District of Pittsville, Wood, Jackson, Clark and Juneau Counties, Wisconsin be authorized to issue pursuant to Chapter 67 of the Wisconsin Statutes, general obligation bonds in an amount not to exceed \$6,700,000 for the public purpose of paying the cost of a school building and improvement program consisting of: the acquisition of land for and the construction of a new facility for career, technical and agricultural education; capital maintenance improvements at the Elementary School and the High School; and acquisition of related furnishings, fixtures and equipment?	
<input type="checkbox"/>	YES
<input type="checkbox"/>	NO

If you support the proposed referendum you would vote yes.
If you do not support the proposed referendum you would vote no.

You Are Invited!

REFERENDUM 2020 OPEN HOUSE & SCHOOL TOUR

TUESDAY, MARCH 17 6 - 7:30PM PITTSVILLE HIGH SCHOOL

Join us for a brief presentation, school tour, and informational open house. Community Members will have an opportunity to meet with School Board members, District Administrators, CTE staff, and the Design/Construction Management Firm Keller, Inc.

LEARN MORE!

Being an informed voter begins with knowing the facts. Here's how:

- **VISIT** with Superintendent Figueroa, Mondays, Feb. 17 - April 6, 4-5PM at the District Office (or) at Empty Bowls, March, 10, 4-6:30PM at the Elementary School
- **CONTACT** the Pittsville School Board:
Mandy Hoogesteger (715.213.9277) Melissa Marti (715.323.3358) Connie Potter (715.884.3011) Jane Wesely (715.884.6235) Robert Wolff (715.884.6502)
- **ATTEND** the Referendum Open House & School Tour, Tuesday, March 17, 6-7:30PM, PHS
- **ONLINE** @ www.pittsville.k12.wi.us for FAQs, online tax calculator, voter information, and more!



DID YOU KNOW?

67% of community survey participants (fall 2019) recommended the School Board pursue a referendum; a majority supported funding for school improvement projects up to \$21 annually (per \$100,000 of property value).

Pittsville's CTE Academy collaborates with over 75 business and community partners. Working together across teaching disciplines and in partnership with local experts, educators, and businesses positively impacts student achievement.

Since 2014, PHS students have participated in 900 job shadows and 300 internships in the fields of engineering, welding, manufacturing, electrical, construction, plumbing, agricultural production, farming, IT, banking, childcare, accounting, teaching, healthcare, and law enforcement.



To SUBMIT A QUESTION, please email us at ref2020@pittsville.k12.wi.us or call (715) 884-6694

PITTSVILLE SCHOOL DISTRICT STUDENTS ARE HIGH ACHIEVERS!

DID YOU KNOW?

Pittsville is recognized nationally for the first Cranberry Science program in the US. Students develop and host a 9-week educational program each year, attracting participants from across the globe. Demand for Ag classes is growing at PHS; FFA participation has more than doubled in three years.

PHS students have earned over 180 college-level credits (2016-19) through partnership programs with Mid-State Technical College in Welding, CAD Drafting, Machine Tool & Metal Fabrication, Construction, Marketing, Microsoft Office, CNA, Early Childhood Education, Nutrition, Horticulture, and Small Animal Science.

Since 2018, 45% of PHS graduates have earned industry recognized certifications.